



Cable ID: SKYNET FTP4 0.51CU

Date / Time: 03/11/2016 02:30:08 PM

Headroom 1.9 dB (NEXT 36-45)

Test Limit: TIA Cat 5e Channel

Cable Type: Cat 5e F/UTP

Calibration Date: 05/29/2012

Operator: XF

Software Version: 2.7700

Limits Version: 1.9400

NVP: 69.0%

Test Summary: PASS

Model: DTX-1800

Main S/N: 2063051

Remote S/N: 2063044

Main Adapter: DTX-CHA002

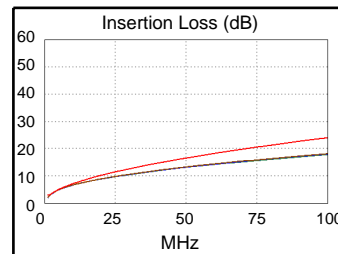
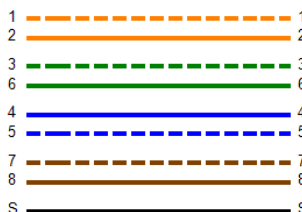
Remote Adapter: DTX-CHA002

Length (ft), Limit 328	[Pair 12]	260
Prop. Delay (ns), Limit 555	[Pair 45]	404
Delay Skew (ns), Limit 50	[Pair 45]	20
Resistance (ohms)	[Pair 45]	15.7
Insertion Loss Margin (dB)	[Pair 78]	5.9
Frequency (MHz)	[Pair 78]	100.0
Limit (dB)	[Pair 78]	24.0

Patch Cable BAD or Patch Cable too short

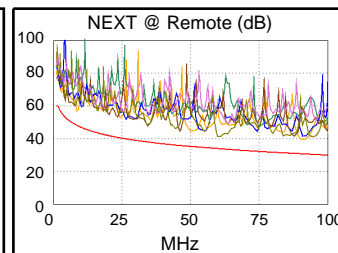
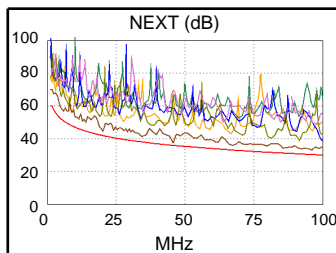
Wire Map (T568B)

PASS

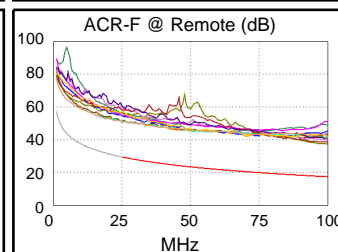
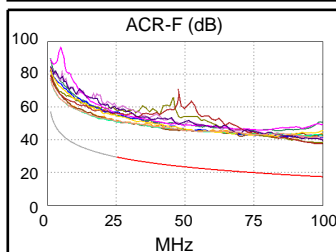


Worst Case Margin Worst Case Value

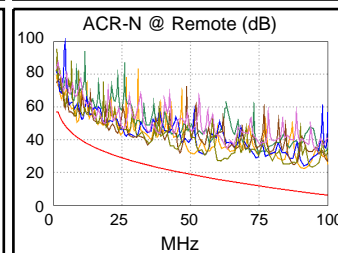
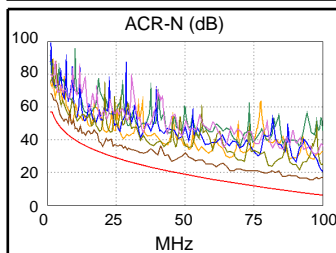
PASS	MAIN	SR	MAIN	SR
Worst Pair	36-45	36-78	36-45	12-36
NEXT (dB)	1.9	6.6	2.6	8.7
Freq. (MHz)	45.5	60.3	95.8	91.8
Limit (dB)	35.9	33.9	30.4	30.7
Worst Pair	36	36	36	12
PS NEXT (dB)	4.8	9.3	4.9	9.7
Freq. (MHz)	45.8	60.3	91.5	91.5
Limit (dB)	32.9	30.9	27.7	27.7



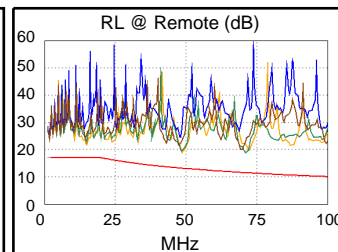
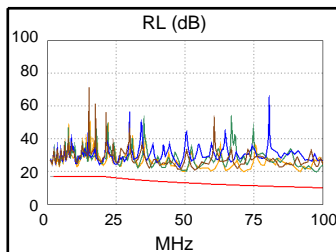
PASS	MAIN	SR	MAIN	SR
Worst Pair	45-36	36-45	45-36	36-45
ACR-F (dB)	20.0	19.8	20.0	20.0
Freq. (MHz)	97.0	96.8	97.0	99.5
Limit (dB)	17.7	17.7	17.7	17.4
Worst Pair	36	36	36	36
PS ACR-F (dB)	20.4	20.8	20.5	20.8
Freq. (MHz)	92.8	96.8	100.0	96.8
Limit (dB)	15.1	14.7	14.4	14.7



N/A	MAIN	SR	MAIN	SR
Worst Pair	36-45	12-36	36-45	12-36
ACR-N (dB)	4.1	8.9	8.3	14.5
Freq. (MHz)	20.0	8.6	95.8	91.8
Limit (dB)	31.8	41.5	7.0	7.8
Worst Pair	36	36	45	12
PS ACR-N (dB)	6.7	10.3	11.2	15.4
Freq. (MHz)	20.0	8.1	95.8	92.0
Limit (dB)	28.8	39.1	4.0	4.8



PASS	MAIN	SR	MAIN	SR
Worst Pair	12	12	36	12
RL (dB)	5.6	4.6	6.1	5.3
Freq. (MHz)	10.8	14.8	50.0	48.8
Limit (dB)	17.0	17.0	13.0	13.1



Compliant Network Standards:

10BASE-T	100BASE-TX	100BASE-T4
1000BASE-T	ATM-25	ATM-51
ATM-155	100VG-AnyLan	TR-4
TR-16 Active	TR-16 Passive	